

Scarborough UTC

Child Protection and Safeguarding Policy

Contents:

Statement of intent

1. [Definitions](#)
2. [Legal framework](#)
3. [Roles and responsibilities](#)
4. [Inter-agency working](#)
5. [Abuse and neglect](#)
6. [Types of abuse and neglect](#)
7. [FGM](#)
8. [Forced marriage](#)
9. [Child sexual exploitation \(CSE\)](#)
10. [Homelessness](#)
11. [County lines criminal activity](#)
12. [Students with family members in prison](#)
13. [Students required to give evidence in court](#)
14. [Contextual safeguarding](#)
15. [Preventing radicalisation](#)
16. [A child missing from education](#)
17. [Students with SEND](#)
18. [Alternative provision](#)
19. [Work experience](#)
20. [Homestay exchange visits](#)
21. [Private fostering](#)
22. [Concerns about a student](#)
23. [Early help](#)
24. [Managing referrals](#)
25. [Concerns about staff members and safeguarding practices](#)
26. [Dealing with allegations of abuse against staff](#)
27. [Allegations of abuse against other students \(peer-on-peer abuse\)](#)
28. [Communication and confidentiality](#)
29. [Online safety](#)
30. [Mobile phone and camera safety](#)
31. [Sports clubs and extracurricular activities](#)
32. [Safer recruitment](#)
33. [Single central record \(SCR\)](#)
34. [Training](#)
35. [Monitoring and review](#)

Appendices

- a) [Safeguarding Reporting Process](#)
- b) [Contacts and Advice](#)

Statement of intent

Scarborough UTC is committed to safeguarding and promoting the welfare, both physical and emotional, of every student both inside and outside of the college premises. We implement a whole-college preventative approach to managing safeguarding concerns, ensuring that the wellbeing of students is at the forefront of all action taken.

This policy sets out a clear and consistent framework for delivering this promise, in line with safeguarding legislation and statutory guidance.

It will be achieved by:

- Creating a culture of safer recruitment by adopting procedures that help deter, reject or identify people who might pose a risk to children.
- Teaching students how to keep safe and recognise behaviour that is unacceptable.
- Identifying and making provision for any student that has been subject to abuse.
- Ensuring that members of the governing board, the principal and staff members understand their responsibilities under safeguarding legislation and statutory guidance, are alert to the signs of child abuse and know to refer concerns to the DSL.
- Ensuring that the principal and any new staff members and volunteers are only appointed when all the appropriate checks have been satisfactorily completed.

The DSL is John Connell. In the absence of the DSL, child protection matters will be dealt with by Jan Moore, DDSL.

Signed by:

Principal

Date:

Chair of governors

Date:

1. Definitions

- 1.1 **[Clarified for 2018]** The terms “**children**” and “**child**” refer to anyone under the age of 18.
- 1.2 For the purposes of this policy, “safeguarding and protecting the welfare of children” is defined as:
- Protecting students from maltreatment.
 - Preventing the impairment of students’ health or development.
 - Ensuring that students grow up in circumstances consistent with the provision of safe and effective care.
 - Taking action to enable all students to have the best outcomes.
- 1.3 For the purposes of this policy, the term “**harmful sexual behaviour**” includes, but is not limited to, the following actions:
- Using sexually explicit words and phrases
 - Inappropriate touching
 - Sexual violence or threats
 - Full penetrative sex with other children or adults
- 1.4 In accordance with the DfE’s guidance, ‘Sexual violence and sexual harassment between children in schools and colleges’ (2018), and for the purposes of this policy, the term “**sexual harassment**” is used within this policy to describe any unwanted conduct of a sexual nature, both online or offline, which violates a child’s dignity and makes them feel intimidated, degraded or humiliated, and can create a hostile, sexualised or offensive environment.
- 1.5 For the purpose of this policy, the term “**sexual violence**” encompasses the definitions provided in the Sexual Offences Act 2003, including those pertaining to rape, assault by penetration and sexual assault.
- 1.6 **[Clarified for 2018]** The term “**teaching role**” is defined as planning and preparing lessons and courses for students; delivering lessons to students; assessing the development, progress and attainment of students; and reporting on the development, progress and attainment of students. These activities are not teaching work if the person carrying out the activity does so (other than for the purposes of induction) subject to the direction and supervision of a qualified teacher or other person nominated by the principal to provide such direction and supervision.

2. Legal framework

- 2.1 This policy has been created with due regard to all relevant legislation including, but not limited to, the following:

Legislation

- Children Act 1989
- Children Act 2004
- Safeguarding Vulnerable Groups Act 2006

- The Education (School Teachers' Appraisal) (England) Regulations 2012 (as amended)
- Sexual Offences Act 2003
- [New for 2018] General Data Protection Regulation (GDPR)
- Data Protection Act 2018

Statutory guidance

- HM Government (2013) 'Multi-agency practice guidelines: Handling cases of Forced Marriage'
- **[Updated for 2018]** DfE (2018) 'Working Together to Safeguard Children'
- DfE (2015) 'The Prevent duty'
- **[Updated for 2018]** DfE (2018) 'Keeping children safe in education'
- DfE (2018) 'Disqualification under the Childcare Act 2006'

Non-statutory guidance

- DfE (2015) 'What to do if you're worried a child is being abused'
- **[Updated for 2018]** DfE (2018) 'Information sharing'
- DfE (2017) 'Child sexual exploitation'
- **[Updated for 2018]** DfE (2018) 'Sexual violence and sexual harassment between children in schools and colleges'

2.2 Other relevant school policies include:

- Child Sexual Exploitation (CSE) Policy
- Children Missing Education Policy
- Extremism and Anti-Radicalisation Policy
- Allegations of Abuse Against Staff Policy
- Conduct for Learning Policy
- Staff Code of Conduct
- **Data Protection Policy**
- Whistleblowing Policy
- **Anti-Bullying Policy**
- **Exclusion Policy**
- **E-Safety Policy**
- **Guest Speaker Policy**
- **Personal Electronic Devices Policy**
- **Data and E-Security Breach Prevention and Management Plan**

3. Roles and responsibilities

3.1 The governing board has a duty to:

- Ensure that the college complies with its duties under the above child protection and safeguarding legislation.
- Guarantee that the policies, procedures and training opportunities in the college are effective and comply with the law at all times.

- Ensure clear accountability for the commission and/or provision of services designed to safeguard and promote the welfare of children.
- Guarantee that the college contributes to inter-agency working in line with the statutory guidance 'Working Together to Safeguard Children' (2018).
- Confirm that the college's safeguarding arrangements take into account the procedures and practices of the LA as part of the inter-agency safeguarding procedures.
- Understand the local criteria for action and the local protocol for assessment, and ensure these are reflected in the college's policies and procedures.
- Comply with its obligations under section 14B of the Children Act 2004 to supply the local safeguarding arrangements with information to fulfil its functions.
- Ensure that staff members have due regard to relevant data protection principles which allow them to share personal information.
- Ensure that a member of the governing board is nominated to liaise with the LA and/or partner agencies on issues of child protection and in the event of allegations of abuse made against the principal or another governor.
- Guarantee that there are effective child protection policies and procedures in place together with a staff code of conduct, which are provided to and read by all staff – including temporary staff and volunteers – on induction.
- Ensure that there is a senior board level lead responsible for safeguarding arrangements.
- Appoint a member of staff from the SLT to the role of DSL as an explicit part of the role-holder's job description.
- The DSL has the appropriate authority and the time, funding, training, resources and support to provide advice and support to other staff on child welfare and child protection matters.
- Appoint one or more deputy DSL(s) to provide support to the DSL and ensure that they are trained to the same standard as the DSL and that the role is explicit in their job description(s).
- Ensure all relevant persons are aware of the college's local safeguarding arrangements, and the timelines for their local safeguarding children boards (LSCBs) to transition to the new system – including the governing board itself, the SLT and DSL.
- Make sure that students are taught about safeguarding, including protection against dangers online, through teaching and learning opportunities, as part of providing a broad and balanced curriculum.
- Adhere to statutory responsibilities by conducting pre-employment checks on staff who work with children, taking proportionate decisions on whether to ask for any checks beyond what is required.
- Ensure that staff members are appropriately trained to support students to be themselves at college, e.g. if they are LGBTQ+.
- Guarantee that volunteers are appropriately supervised.
- Where services or activities are provided on the school premises by another body, the body concerned has appropriate policies and procedures in place in

regard to safeguarding children and child protection and liaises with the college on these matters where appropriate.

- Make sure that at least one person on any appointment panel has undertaken safer recruitment training.
- The college has written recruitment and selection policies and procedures in place.
- Ensure that all staff members receive safeguarding and child protection training updates, such as e-bulletins, emails and staff meetings, as required, but at least annually.
- Certify that there are procedures in place to handle allegations against members of staff or volunteers.
- Confirm that there are procedures in place to make a referral to the DBS and the Teaching Regulation Agency (TRA), where appropriate, if a person in regulated activity has been dismissed or removed due to safeguarding concerns or would have been had they not resigned.
- Guarantee that there are procedures in place to handle students' allegations against other students.
- Ensure that appropriate disciplinary procedures are in place, as well as policies pertaining to the behaviour of students and staff.
- Ensure that procedures are in place to eliminate unlawful discrimination, harassment and victimisation, including those in relation to peer-on-peer abuse.
- Make sure that students' wishes and feelings are taken into account when determining what action to take and what services to provide to protect individual students.
- Guarantee that there are systems in place for students to express their views and give feedback.
- Children are safeguarded from potentially harmful and inappropriate online material.
- Appropriate filters and appropriate monitoring systems are in place so children are safeguarded from potentially harmful and inappropriate online material being careful that "over blocking" does not lead to unreasonable restrictions as to what children can be taught with regards to online teaching and safeguarding.
- Establish an early help procedure and ensure all staff understand the procedure and their role in it.
- Appoint a designated teacher to promote the educational achievement of LAC and ensure that this person has undergone appropriate training.
- Ensure that the designated teacher works with the virtual school head to discuss how the student premium funding can best be used to support LAC.
- Introduce mechanisms to assist staff in understanding and discharging their roles and responsibilities.
- Make sure that staff members have the skills, knowledge and understanding necessary to keep LAC safe, particularly with regards to the student's legal status, contact details and care arrangements.

- Put in place appropriate safeguarding responses for students who go missing from college, particularly on repeat occasions, to help identify any risk of abuse and neglect, including sexual abuse or exploitation, and prevent the risk of their disappearance in future.
- The college has due regard in particular to the duty to prevent people from being drawn into terrorism; to report known cases of female genital mutilation.
- Ensure that all members of the governing board have been subject to an enhanced DBS check.
- There is an annual review of policies and procedures and the College's Safeguarding Audit is completed.
- Create a culture where staff are confident to challenge senior leaders over any safeguarding concerns.

3.2 The principal has a duty to:

- Safeguard students' wellbeing and maintain public trust in the teaching profession.
- Ensure that the policies and procedures adopted by the governing board, particularly concerning referrals of cases of suspected abuse and neglect, are followed by staff members.
- Provide staff, upon induction, with the Child Protection and Safeguarding Policy, Staff Code of Conduct, part one of the 'Keeping children safe in education' (KCSIE) guidance, Conduct for Learning Policy, the Children Missing from Education Policy, online safety training, and the identity of the DSL and any deputies.

3.3 The DSL has a duty to:

- Understand, and keep up-to-date with, local plans for their LSCB's transition to the new multi-agency arrangement of three safeguarding partners.
- Act as the main point of contact with the LSCB, and with the three safeguarding partners following completion of the transition period.
- Refer all cases of suspected abuse to children's social care services (CSCS), the LA designated officer (LADO) for child protection concerns, the DBS, and the police in cases where a crime has been committed.
- Refer cases of radicalisation to the Channel programme.
- Liaise with the principal to inform them of safeguarding issues, especially ongoing enquiries under section 47 of the Children Act 1989 and police investigations.
- Liaise with the deputy DSL(s) to ensure effective safeguarding outcomes.
- Act as a source of support, advice and expertise to staff members on matters of safeguarding by liaising with relevant agencies.
- Understand the assessment process for providing early help and intervention.
- Support staff members in liaising with other agencies and setting up inter-agency assessment where early help is deemed appropriate.
- Keep cases of early help under constant review and refer them to the CSCS if the situation does not appear to be improving.

- Have a working knowledge of how LAs conduct a child protection case conference and a child protection review conference and be able to attend and contribute to these effectively when required to do so.
- Ensure each member of staff has access to and understands the college's Child Protection and Safeguarding Policy and procedures – this will be discussed during the staff induction process.
- Be alert to the specific requirements of children in need, including those with SEND and young carers.
- Keep detailed, accurate and secure records of concerns and referrals.
- Secure access to resources and attend any relevant training courses.
- Encourage a culture of listening to children and taking account of their wishes and feelings.
- Work with the governing board to ensure the college's Child Protection and Safeguarding Policy is reviewed annually and the procedures are updated regularly.
- Ensure the college's Child Protection and Safeguarding Policy is available publicly, and parents are aware that the college may make referrals for suspected cases of abuse or neglect, as well as the role the college plays in these referrals.
- Link with local safeguarding arrangements to make sure that staff members are aware of the training opportunities available and the latest local policies on safeguarding.
- Ensure that a student's child protection file is copied when transferring to a new school.
- Ensure the child protection file is transferred to the new school or college as soon as possible. This should be transferred separately from the main student file, ensuring secure transit and obtaining confirmation of receipt.
- Ensure that CP records are retained until the young person's 25th birthday if the college is the final school.
- Ensure that, if a child goes missing or leaves to be educated at home, the child protection file is forwarded to the Safeguarding Unit Manager, Northallerton, DL7 8AE ensuring secure transit and obtaining confirmation of receipt.
- Ensure that the key worker in Prevention Service or Children's Social Care is informed where the child leaves the college.
- Be available at all times during college hours to discuss any safeguarding concerns.*
- Hold the details of the LA personal advisor and liaise with them as necessary.

***NB. The college will determine what "available" means, e.g. it may be appropriate to be accessible by electronic means such as phone or Skype.**

- The designated teacher has a responsibility for promoting the educational achievement of LAC and previously LAC, and for children who have left care through adoption, special guardianship or child arrangement orders or who were adopted from state care outside England and Wales.

3.4 Other staff members have a responsibility to:

- Have due regard to the duty to prevent people from being drawn into terrorism; report known cases of female genital mutilation and follow procedures when a child goes missing from education.
- Where there are concerns about another staff member, refer these concerns to the principal.
- Where there are concerns about the principal, refer these concerns to the chair of governors.
- Raise concerns about poor or unsafe practices in the college via whistleblowing procedures.
- Be aware of systems within college which support safeguarding and these should be explained to them as part of staff induction. This includes: the college's child protection policy; the college's staff code of conduct; and the identity and role of the DSL.
- Receive appropriate child protection training which is regularly updated.
- Safeguard students' wellbeing and maintain public trust in the teaching profession as part of their professional duties.
- Provide a safe environment in which students can learn.
- Act in accordance with college procedures with the aim of eliminating unlawful discrimination, harassment and victimisation, including those in relation to peer-on-peer abuse.
- Maintain an attitude of 'it could happen here' where safeguarding is concerned.
- Be aware of the signs of abuse and neglect.
- Be aware of the early help process and understand their role in it.
- Act as the lead professional in undertaking an early help assessment, where necessary.
- Be aware of, and understand, the process for making referrals to CSCS, as well as for making statutory assessments under the Children Act 1989 and their role in these assessments.
- Be confident of the processing conditions under relevant data protection legislation, including information which is sensitive and personal, and information that should be treated as special category data.
- Make a referral to CSCS and/or the police immediately, if at any point there is a risk of immediate serious harm to a child.
- Be aware of and understand the procedure to follow in the event that a child confides they are being abused or neglected.
- Support social workers in making decisions about individual children, in collaboration with the DSL.
- Maintain appropriate levels of confidentiality when dealing with individual cases, and always act in the best interest of the child.
- Follow the college's procedure for, and approach to, preventing radicalisation as outlined in the Extremism and Anti-Radicalisation Policy.
- Challenge senior leaders over any safeguarding concerns, where necessary.

4. Inter-agency working

- 4.1 The college contributes to inter-agency working as part of its statutory duty.
- 4.2 The college is aware of the expected timeline for its LSCB to fully transition to new system of three safeguarding partners.
- 4.3 The college will work with CSCS, the police, health services and other services to protect the welfare of its students, through the early help process and by contributing to inter-agency plans to provide additional support.
- 4.4 Where a need for early help is identified, the college will allow access for CSCS from the host LA and, where appropriate, a placing LA, for that LA to conduct (or consider whether to conduct) a section 17 or 47 assessment.
- 4.5 The college recognises the importance of proactive information sharing between professionals and local agencies in order to effectively meet students' needs and identify any need for early help.
- 4.6 Considering 4.3, staff members are aware that whilst the GDPR and the Data Protection Act 2018 place a duty on schools to process personal information fairly and lawfully, they also allow for information to be stored and shared for safeguarding purposes – data protection regulations do not act as a barrier to sharing information where failure to do so would result in the student being placed at risk of harm.
- 4.7 Staff members will ensure that fear of sharing information does not stand in the way of their responsibility to promote the welfare and safety of students.
- 4.8 If staff members are in doubt about sharing information, they will speak to the DSL or deputy DSL.
- 4.9 The college also recognises the particular importance of inter-agency working in identifying and preventing child sexual exploitation (CSE).

5. Abuse and neglect

- 5.1 All members of staff will be aware that abuse, neglect and safeguarding issues are rarely standalone events that can be given a specific label and multiple issues often overlap one another.
- 5.2 All staff members will be aware of the indicators of abuse and the appropriate action to take following a student being identified as at potential risk of abuse or neglect.
- 5.3 When identifying students at risk of potential harm, staff members will look out for a number of indicators including, but not limited to, the following:
 - Injuries in unusual places, such as bite marks on the neck, that are also inconsistent with their age
 - Lack of concentration and acting withdrawn
 - Knowledge ahead of their age, e.g. sexual knowledge.
 - Use of explicit language
 - Fear of abandonment
 - Depression and low self-esteem

- 5.4 All members of staff will be aware of the indicators of peer-on-peer abuse, such as those in relation to bullying, gender-based violence, sexual assaults and sexting.
- 5.5 All staff will be aware of the necessary procedures to follow to prevent peer-on-peer abuse, as outlined in the college's Anti-Bullying Policy.
- 5.6 All staff will be aware of the behaviours linked to drug taking, alcohol abuse, truancy and sexting, and will understand that these put students in danger.
- 5.7 Staff members will be aware of the effects of a student witnessing an incident of abuse, such as witnessing domestic violence at home.

6. Types of abuse and neglect

- 6.1 **Abuse:** A form of maltreatment of a child which involves inflicting harm or failing to act to prevent harm. Children may be abused in a family, institutional or community setting by those known to them or, more rarely, by others, e.g. via the internet.
- 6.2 **Physical abuse:** A form of abuse which may involve actions such as hitting, throwing, burning, drowning and poisoning, or otherwise causing physical harm to a child. Physical abuse can also be caused when a parent fabricates the symptoms of, or deliberately induces, illness in a child.
- 6.3 **Emotional abuse:** A form of abuse which involves the emotional maltreatment of a child to cause severe and adverse effects on the child's emotional development. This may involve telling a child they are worthless, unloved, inadequate, not giving them the opportunities to express their views, deliberately silencing them, or often making them feel as though they are in danger.
- 6.4 **Sexual abuse:** A form of abuse which involves forcing or enticing a child to take part in sexual activities, not necessarily involving a high level of violence, and whether or not the child is aware of what is happening. This may involve physical assault, such as penetrative assault and touching, or non-penetrative actions, such as looking at sexual images or encouraging children to behave in inappropriate ways.
- 6.5 **Neglect:** A form of abuse which involves the persistent failure to meet a child's basic physical and/or psychological needs, likely to result in serious impairment of a child's health or development. This may involve providing inadequate food, clothing or shelter, or the inability to protect a child from physical or emotional harm or ensure access to appropriate medical treatment.

7. FGM

- 7.1 For the purpose of this policy, FGM is defined as the partial or total removal of the external female genitalia, or any other injury to the female genital organs.
- 7.2 FGM is considered a form of abuse in the UK and is illegal.
- 7.3 All staff will be alert to the possibility of a girl being at risk of FGM, or already having suffered FGM. If staff members are worried about someone who is at risk of FGM or who has been a victim of FGM, they are required to share this information with social care and/or the police.

7.4 Teaching staff are **legally required** to report to the police any discovery, whether through disclosure by the victim or visual evidence, of FGM on a girl under the age of 18. Teachers failing to report such cases will face disciplinary action.

NB. The above does not apply to any suspected or at-risk cases, nor if the individual is over the age of 18. In such cases, local safeguarding procedures will be followed.

7.5 There are a range of potential indicators that a student may be at risk of FGM. While individually they may not indicate risk, if two or more indicators are present, this could signal a risk to the student.

7.6 Victims of FGM are most likely to come from communities that are known to adopt this practice. It is important to note that the student may not yet be aware of the practice or that it may be conducted on them, so staff will be sensitive when broaching the subject.

7.7 Indicators that may show a heightened risk of FGM include the following:

- The socio-economic position of the family and their level of integration into UK society
- Any girl with a mother or sister who has been subjected to FGM
- Any girl withdrawn from PSHE

7.8 Indicators that may show FGM could take place soon include the following:

- When a female family elder is visiting from a country of origin
- A girl may confide that she is to have a 'special procedure' or a ceremony to 'become a woman'
- A girl may request help from a teacher if she is aware or suspects that she is at immediate risk
- A girl, or her family member, may talk about a long holiday to her country of origin or another country where the practice is prevalent

7.9 Staff will be vigilant to the signs that FGM has already taken place so that help can be offered, enquiries can be made to protect others, and criminal investigations can begin.

7.10 Indicators that FGM may have already taken place include the following:

- Difficulty walking, sitting or standing
- Spending longer than normal in the bathroom or toilet
- Spending long periods of time away from a classroom during the day with bladder or menstrual problems
- Prolonged or repeated absences from school followed by withdrawal or depression
- Reluctance to undergo normal medical examinations
- Asking for help, but not being explicit about the problem due to embarrassment or fear

7.11 Teachers will not examine students, and so it is rare that they will see any visual evidence, but they will report to the police where an act of FGM appears to have been carried out. Unless the teacher has a good reason not to, they should also consider and discuss any such case with the DSL and involve CSCS as appropriate.

- 7.12 FGM is also included in the definition of ‘honour-based’ violence (HBV), which involves crimes that have been committed to defend the honour of the family and/or community, alongside forced marriage and breast ironing.
- 7.13 All forms of HBV are forms of abuse and will be treated and escalated as such.
- 7.14 Staff will be alert to the signs of HBV, including concerns that a child is at risk of HBV, or has already suffered from HBV, and will consult with the DSL who will activate local safeguarding procedures if concerns arise.

8. Forced marriage

- 8.1 For the purpose of this policy, a **“forced marriage”** is defined as a marriage that is entered into without the full and free consent of one or both parties, and where violence, threats or any other form of coercion is used to cause a person to enter into the marriage. Forced marriage is classed as a crime in the UK.
- 8.2 As part of HBV, staff will be alert to the signs of forced marriage including, but not limited to, the following:
- Becoming anxious, depressed and emotionally withdrawn with low self-esteem
 - Showing signs of mental health disorders and behaviours such as self-harm or anorexia
 - Displaying a sudden decline in their educational performance, aspirations or motivation
 - Regularly being absent from school
 - Displaying a decline in punctuality
 - An obvious family history of older siblings leaving education early and marrying early
- 8.3 If staff members have any concerns regarding a child who may have undergone, is currently undergoing, or is at risk of, forced marriage, they will speak to the DSL and local safeguarding procedures will be followed – this could include referral to CSCS, the police or the Forced Marriage Unit.

9. Child sexual exploitation (CSE)

- 9.1 For the purpose of this policy, **“child sexual exploitation”** is defined as: a form of sexual abuse where an individual or group takes advantage of an imbalance of power to coerce, manipulate or deceive a child or young person into sexual activity, for either, or both, of the following reasons:
- In exchange for something the victim needs or wants
 - For the financial advantage or increased status of the perpetrator or facilitator
- 9.2 CSE does not always involve physical contact, as it can also occur online. It is also important to note that a child can be sexually exploited even if the sexual activity appears consensual.
- 9.3 The college has adopted the following procedure for handling cases of CSE, as outlined by the DfE:

Identifying cases

9.4 College staff members are aware of and look for the key indicators of CSE; these are as follows:

- Going missing for periods of time or regularly going home late
- Regularly missing lessons
- Appearing with unexplained gifts and new possessions
- Associating with other young people involved in exploitation
- Having older boyfriends or girlfriends
- Undergoing mood swings or drastic changes in emotional wellbeing
- Displaying inappropriate sexualised behaviour
- Suffering from sexually transmitted infections or becoming pregnant
- Displaying changes in emotional wellbeing
- Misusing drugs or alcohol

Referring cases

9.5 Where CSE, or the risk of it, is suspected, staff will discuss the case with the DSL. If after discussion a concern still remains, local safeguarding procedures will be triggered, including referral to the LA.

Support

9.6 The LA and all other necessary authorities will then handle the matter to conclusion. The school will cooperate as needed.

10. Homelessness

10.1 The DSL and deputy(s) will be aware of the contact details and referral routes in to the Local Housing Authority so that concerns over homelessness can be raised as early as possible.

10.2 Indicators that a family may be at risk of homelessness include the following:

- Household debt
- Rent arrears
- Domestic abuse
- Anti-social behaviour
- Any mention of a family moving home because “they have to”

10.3 Referrals to the Local Housing Authority do not replace referrals to CSCS where a child is being harmed or at risk of harm.

10.4 For 16- and 17-year-olds, homelessness may not be family-based and referrals to CSCS will be made as necessary where concerns are raised.

11. County lines criminal activity

11.1 For the purpose of this policy, “**County lines criminal activity**” refers to drug networks or gangs grooming and exploiting children to carry drugs and money from urban areas to suburban areas, rural areas and market and seaside towns.

11.2 Staff will be made aware of students with missing episodes who may have been trafficked for the purpose of transporting drugs.

11.3 Staff members who suspect a student may be vulnerable to, or involved in, this activity will immediately report all concerns to the DSL.

11.4 The DSL will consider referral to the National Referral Mechanism on a case-by-case basis.

11.5 Indicators that a student may be involved in county lines active include the following:

- Persistently going missing or being found out of their usual area
- Unexplained acquisition of money, clothes or mobile phones
- Excessive receipt of texts or phone calls
- Relationships with controlling or older individuals or groups
- Leaving home without explanation
- Evidence of physical injury or assault that cannot be explained
- Carrying weapons
- Sudden decline in school results
- Becoming isolated from peers or social networks
- Self-harm or significant changes in mental state
- Parental reports of concern

12. Students with family members in prison

12.1 Students with a family member in prison will be offered pastoral support as necessary.

12.2 They will receive a copy of '[Are you a young person with a family member in prison](#)' from Action for Prisoners' Families where appropriate and allowed the opportunity to discuss questions and concerns.

13. Students required to give evidence in court

13.1 Students required to give evidence in criminal courts, either for crimes committed against them or crimes they have witnessed, will be offered appropriate pastoral support.

13.2 Students will also be provided with the booklet '[Going to Court and being a witness](#)' from HMCTS where appropriate and allowed the opportunity to discuss questions and concerns.

14. Contextual safeguarding

14.1 Safeguarding incidents can occur outside of college and can be associated with outside factors. College staff, particularly the DSL and their deputy(s), will always consider the context of incidents – this is known as contextual safeguarding.

14.2 Assessment of students' behaviour will consider whether there are wider environmental factors that are a threat to their safety and/or welfare.

14.3 The college will provide as much contextual information as possible when making referrals to CSCS.

15. Preventing radicalisation

15.1 For the purpose of this policy, "**radicalisation**" refers to the process by which a person comes to support terrorism and extremist ideologies.

- 15.2 Protecting children from the risk of radicalisation is part of the college's wider safeguarding duties.
- 15.3 The college will actively assess the risk of students being drawn into terrorism.
- 15.4 Staff will be alert to changes in students' behaviour which could indicate that they may be in need of help or protection.
- 15.5 Staff will use their professional judgement to identify students who may be at risk of radicalisation and act appropriately, which may include making a referral to the Channel programme. The college will work with local safeguarding arrangements as appropriate.
- 15.6 The college will ensure that they engage with parents and families, as they are in a key position to spot signs of radicalisation. In doing so, the college will assist and advise family members who raise concerns and provide information for support mechanisms.
- 15.7 Any concerns over radicalisation will be discussed with a child's parents, unless the college has reason to believe that the child would be placed at risk as a result.

Training

- 15.8 The DSL will undertake Prevent awareness training to be able to provide advice and support to other staff on how to protect children against the risk of radicalisation. The DSL will hold formal training sessions with all members of staff to ensure they are aware of the risk indicators and their duties regarding preventing radicalisation.

Risk indicators of vulnerable students

- 15.9 Indicators of an identity crisis include the following:
- Distancing themselves from their cultural/religious heritage
 - Uncomfortable with their place in society
- 15.10 Indicators of a personal crisis include the following:
- Family tensions
 - A sense of isolation
 - Low self-esteem
 - Disassociation from existing friendship groups
 - Searching for answers to questions about identity, faith and belonging
- 15.11 Indicators of vulnerability through personal circumstances includes the following:
- Migration
 - Local community tensions
 - Events affecting their country or region of origin
 - Alienation from UK values
 - A sense of grievance triggered by personal experience of racism or discrimination
- 15.12 Indicators of vulnerability through unmet aspirations include the following:
- Perceptions of injustice
 - Feelings of failure

- Rejection of civic life
- Indicators of vulnerability through criminality:
- Experiences of dealing with the police
- Involvement with criminal groups

Making a judgement

15.13 When making a judgement, staff will ask themselves the following questions:

- Does the student have access to extremist influences?
- Does the student access the internet for the purposes of extremist activities (e.g. using closed network groups, accessing or distributing extremist material, contacting such groups covertly using Skype)?
- Is there a reason to believe that the student has been, or is likely to be, involved with extremist organisations?
- Is the student known to have possessed, or be actively seeking, extremist literature/other media likely to incite racial or religious hatred?
- Does the student sympathise with or support illegal/illicit groups?
- Does the student support groups with links to extremist activity?
- Has the student encountered peer, social, family or faith group rejection?
- Is there evidence of extremist ideological, political or religious influence on the student?
- Have international events in areas of conflict and civil unrest had a noticeable impact on the student?
- Has there been a significant shift in the student's outward appearance that suggests a new social, political or religious influence?
- Has the student come into conflict with family over religious beliefs, lifestyle or dress choices?
- Does the student vocally support terrorist attacks, either verbally or in their written work?
- Has the student witnessed or been the victim of racial or religious hate crimes?
- Is there a pattern of regular or extended travel within the UK?
- Has the student travelled for extended periods of time to international locations?
- Has the student employed any methods to disguise their identity?
- Does the student have experience of poverty, disadvantage, discrimination or social exclusion?
- Does the student display a lack of affinity or understanding for others?
- Is the student the victim of social isolation?
- Does the student demonstrate a simplistic or flawed understanding of religion or politics?
- Is the student a foreign national or refugee, or awaiting a decision on their/their family's immigration status?
- Does the student have insecure, conflicted or absent family relationships?
- Has the student experienced any trauma in their lives, particularly trauma associated with war or sectarian conflict?

- Is there evidence that a significant adult or other person in the student's life has extremist views or sympathies?

15.14 Critical indicators include where the student is:

- In contact with extremist recruiters.
- Articulating support for extremist causes or leaders.
- Accessing extremist websites.
- Possessing extremist literature.
- Using extremist narratives and a global ideology to explain personal disadvantage.
- Justifying the use of violence to solve societal issues.
- Joining extremist organisations.
- Making significant changes to their appearance and/or behaviour.

15.15 Any member of staff who identifies such concerns, because of observed behaviour or reports of conversations, will report these to the DSL.

15.16 The DSL will consider whether a situation may be so serious that an emergency response is required. In this situation, a 999 call will be made; however, concerns are most likely to require a police investigation as part of the Channel programme, in the first instance.

Channel programme

15.17 Safeguarding children is a key role for both the college and the LA, which is implemented through the use of the Channel programme. This service shall be used where a vulnerable student is at risk of being involved in terrorist activities.

15.18 In cases where the college believes a student is potentially at serious risk of being radicalised, the principal or DSL will contact the Channel programme.

15.19 The DSL will also support any staff making referrals to the Channel programme.

15.20 The Channel programme ensures that vulnerable children and adults of any faith, ethnicity or background, receive support before their vulnerabilities are exploited by those that would want them to embrace terrorism, and before they become involved in criminal terrorist-related activity.

15.21 The programme identifies individuals at risk, assesses the extent of that risk, and develops the most appropriate support plan for the individuals concerned, with multi-agency cooperation and support from the college.

15.22 The delivery of the Channel programme may often overlap with the implementation of the LA's or college's wider safeguarding duty, especially where vulnerabilities have been identified that require intervention from CSCS, or where the individual is already known to CSCS.

Extremist speakers

15.23 The [Guest Speaker Policy](#) prevents speakers who may promote extremist views from using the college premises.

Building children's resilience

15.24 The college will:

- Provide a safe environment for debating controversial issues.
- Promote fundamental British values, alongside students' spiritual, moral, social and cultural development.
- Allow students time to explore sensitive and controversial issues.
- Provide students with the knowledge and skills to understand and manage potentially difficult situations, recognise risk, make safe choices and recognise where pressure from others threatens their personal safety and wellbeing.
- Equip students to explore political and social issues critically, weigh evidence, debate, and make reasoned arguments.
- Teach students about how democracy, government and law making/enforcement occur.
- Teach students about mutual respect and understanding for the diverse national, regional, religious and ethnic identities of the UK.

Resources

15.25 The college will utilise the following resources when preventing radicalisation:

- Local safeguarding arrangements
- Local police (contacted via 101 for non-emergencies)
- The DfE's dedicated helpline (020 7340 7264)
- The Channel awareness programme
- The [Educate Against Hate](#) website

16. A child missing from education

- 16.1 A child going missing from college is a potential indicator of abuse or neglect and, as such, these children are increasingly at risk of being victims of harm, exploitation or radicalisation.
- 16.2 Staff will monitor students that go missing from the college, particularly on repeat occasions, and report them to the DSL following normal safeguarding procedures, in accordance with the Children Missing Education Policy.
- 16.3 The college will inform the LA of any student who fails to attend regularly or has been absent without the college's permission for a continuous period of 10 school days or more.

Admissions register

- 16.4 Students are placed on the admissions register at the beginning of the first day that is agreed by the college, or when the college has been notified that the student will first be attending.
- 16.5 The college will notify the LA within five days of when a student's name is added to the admissions register.
- 16.6 The college will ensure that the admissions register is kept up-to-date and accurate at all times and will inform parents when any changes occur.
- 16.7 Two emergency contact details will be held for each student where possible.
- 16.8 Staff will monitor students who do not attend the college on the agreed date and will notify the LA at the earliest opportunity.

16.9 If a parent notifies the college that their child will live at a different address, the college will record the following information on the admissions register:

- The full name of the parent with whom the student will live
- The new address
- The date from when the student will live at that address

16.10 If a parent notifies the college that their child will be attending a different school, or is already registered at a different school, the following information will be recorded on the admissions register:

- The name of the new school
- The date on which the student first attended, or is due to attend, that school

16.11 Where a student moves to a new school, the college will use a secure internet system to securely transfer students' data.

16.12 To ensure accurate data is collected to allow effective safeguarding, the college will inform the LA of any student who is going to be deleted from the admission register, in accordance with the Education (Student Registration) (England) Regulations 2006 (as amended), where they:

- Have been taken out of the college by their parents, and are being educated outside the national education system, e.g. home education.
- Have ceased to attend the college, and no longer live within a reasonable distance of the premises.
- Have been certified by the college's medical officer as unlikely to be in a fit state of health to attend, before ceasing to be of compulsory school age, and their parent has not indicated the intention to the student continuing to attend school after ceasing to be of compulsory school age.
- Have been in custody for a period of more than four months due to a final court order and the college does not reasonably believe they will be returning to the college at the end of that period.
- Have been permanently excluded.

16.13 The college will also remove a student from the admissions register where the college and LA has been unable to establish the student's whereabouts after making reasonable enquiries into their attendance.

16.14 If a student is to be removed from the admissions register, the college will provide the LA with the following information:

- The full name of the student
- The full name and address of any parent with whom the student lives
- At least one telephone number of the parent with whom the student lives
- The full name and address of the parent with whom the student is going to live, and the date that the student will start living there, if applicable
- The name of the student's new school and the student's expected start date there, if applicable

- The grounds for removal from the admissions register under regulation 8 of the Education (Student Registration) (England) Regulations 2006 (as amended)

16.15 The college will work with the LA to establish methods of making returns for students back into the college.

16.16 The college will highlight to the LA where they have been unable to obtain necessary information from parents, e.g. where an address is unknown.

16.17 The college will also highlight any other necessary contextual information including safeguarding concerns

17. Students with SEND

17.1 The college recognises that students with SEND can face additional safeguarding challenges and understands that further barriers may exist when determining abuse and neglect in this group of students.

17.2 Staff will be aware of the following:

- Certain indicators of abuse, such as behaviour, mood and injury, may relate to the student's disability without further exploration; however, it should never be assumed that a child's indicators relate only to their disability
- Students with SEND can be disproportionately impacted by things like bullying, without outwardly showing any signs
- Communication barriers may exist, as well as difficulties in overcoming these barriers

17.3 When reporting concerns or making referrals for students with SEND, the above factors will always be taken into consideration.

17.4 When managing a safeguarding issue relating to a student with SEND, the DSL will liaise with the college's SENCO, as well as the student's family where appropriate, to ensure that the student's needs are effectively met.

18. Alternative provision

18.1 The college will remain responsible for a student's welfare during their time at an alternative provider.

18.2 When placing a student with an alternative provider, the college will obtain written confirmation that the provider has conducted all relevant safeguarding checks on staff.

19. Work experience

19.1 When a student is sent on work experience, the college will ensure that the provider has appropriate safeguarding policies and procedures in place.

19.2 Where the college has students conduct work experience at the school, an enhanced DBS check will be obtained if the student is over the age of 16.

20. Homestay exchange visits

School-arranged homestays in UK

- 20.1 Where the college is arranging for a visiting child to be provided with care and accommodation in the UK in the home of a family to which the child is not related, the responsible adults are considered to be in regulated activity for the period of the stay.
- 20.2 In such cases, the college is the regulated activity provider; therefore, the college will obtain all the necessary information required, including a DBS enhanced certificate with barred list information, to inform its assessment of the suitability of the responsible adults.
- 20.3 Where criminal record information is disclosed, the college will consider, alongside all other information, whether the adult is a suitable host.
- 20.4 In addition to the responsible adults, the college will consider whether a DBS enhanced certificate should be obtained for anyone else aged over 16 in the household.

College-arranged homestays abroad

- 20.5 The college will liaise with partner schools to discuss and agree the arrangements in place for the visit.
- 20.6 The college will consider, on a case-by-case basis, whether to contact the relevant foreign embassy or High Commission of the country in question to ascertain what checks may be possible in respect of those providing homestay outside of the UK.
- 20.7 The college will use its professional judgement to assess whether the arrangements are appropriate and sufficient to safeguard every child involved in the exchange.
- 20.8 Students will be provided with emergency contact details to use where an emergency occurs or a situation arises that makes them feel uncomfortable.

Privately arranged homestays

- 20.9 Where a parent or student arranges their own homestay, this is a private arrangement and the college is not the regulated activity provider.

21. Private fostering

- 21.1 Where the college becomes aware of a student being privately fostered, they will notify the LA as soon as possible to allow the LA to conduct any necessary checks.

22. Concerns about a student

- 22.1 If a member of staff has any concern about a child's welfare, they will act on them immediately by speaking to the DSL or a deputy.
- 22.2 All staff members are aware of the procedure for reporting concerns and understand their responsibilities in relation to confidentiality and information sharing, as outlined in [section 28](#) of this policy.
- 22.3 Where the DSL is not available to discuss the concern with, staff members will contact the deputy DSL with the matter.
- 22.4 If a referral is made about a child by anyone other than the DSL, the DSL will be informed as soon as possible.

- 22.5 The LA will make a decision regarding what action is required within one working day of the referral being made and will notify the referrer.
- 22.6 Staff are required to monitor a referral if they do not receive information from the LA regarding what action is necessary for the student.
- 22.7 If the situation does not improve after a referral, the DSL will ask for reconsideration to ensure that their concerns have been addressed and that the situation improves for the student.
- 22.8 If early help is appropriate, the case will be kept under constant review. If the student's situation does not improve, a referral will be considered.
- 22.9 All concerns, discussions and decisions made, as well as the reasons for making those decisions, will be recorded in writing by the DSL and kept securely in a locked cabinet.
- 22.10 If a student is in immediate danger, a referral will be made to CSCS and/or the police immediately.
- 22.11 If a student has committed a crime, such as sexual violence, the police will be notified without delay.
- 22.12 Where there are safeguarding concerns, the college will ensure that the student's wishes are always taken into account, and that there are systems available for students to provide feedback and express their views.
- 22.13 When responding to safeguarding concerns, staff members will act calmly and supportively, ensuring that the student feels like they are being listened to and believed.
- 22.14 An inter-agency assessment will be undertaken where a child and their family could benefit from coordinated support from more than one agency. These assessments will identify what help the child and family require in preventing needs escalating to a point where intervention would be needed.

23. Early help

- 23.1 Early help means providing support as soon as a problem emerges, at any point in a child's life.
- 23.2 Any student may benefit from early help, but in particular staff will be alert to the potential need for early help for students who:
- Have SEND (whether or not they have a statutory EHC plan).
 - Are young carers.
 - Show signs of being drawn into anti-social or criminal behaviour, including gang involvement and association with organised crime groups.
 - Are frequently missing/going missing from care or from home.
 - Misuse drugs or alcohol.
 - Are at risk of modern slavery, trafficking or exploitation.
 - Are in a family circumstance presenting challenges such as substance abuse, adult mental health problems or domestic abuse.
 - Are returned home to their family from care.
 - Show early signs of abuse and/or neglect.

- Are at risk of being radicalised or exploited.
- Are privately fostered.

23.3 Early help will also be used to address non-violent harmful sexual behaviour to prevent escalation.

23.4 All staff will be made aware of the local early help process and understand their role in it.

23.5 The DSL will take the lead where early help is appropriate.

24. Managing referrals

24.1 The reporting and referral process outlined in [Appendix B](#) will be followed accordingly.

24.2 All staff members, in particular the DSL, will be aware of the LA's arrangements in place for managing referrals. The DSL will provide staff members with clarity and support where needed.

24.3 When making a referral to CSCS or other external agencies, information will be shared in line with confidentiality requirements and will only be shared where necessary to do so.

24.4 The DSL will work alongside external agencies, maintaining continuous liaison, including multi-agency liaison where appropriate, in order to ensure the wellbeing of the students involved.

24.5 The DSL will work closely with the police to ensure the college does not jeopardise any criminal proceedings, and to obtain help and support as necessary.

24.6 Where a student has been harmed or is in immediate danger or at risk of harm, the referrer will be notified of the action that will be taken within one working day of a referral being made. **Where this information is not forthcoming, the referrer will contact the assigned social worker for more information.**

24.7 The college will not wait for the start or outcome of an investigation before protecting the victim and other students: this applies to criminal investigations as well as those made by CSCS.

24.8 Where CSCS decide that a statutory investigation is not appropriate, the college will consider referring the incident again if it is believed that the student is at risk of harm.

24.9 Where CSCS decide that a statutory investigation is not appropriate and the college agrees with this decision, the college will consider the use of other support mechanisms, such as early help and pastoral support.

24.10 At all stages of the reporting and referral process, the student will be informed of the decisions made, actions taken and reasons for doing so.

24.11 Discussions of concerns with parents will only take place where this would not put the student or others at potential risk of harm.

24.12 The college will work closely with parents to ensure that the student, as well as their family, understands that the arrangements in place, such as in-college interventions, are effectively supported and know where they can access additional support.

25. Concerns about staff members and safeguarding practices

- 25.1 If a staff member has concerns about another member of staff, it will be raised with the principal.
- 25.2 If the concern is with regards to the principal, it will be referred to the chair of governors.
- 25.3 Any concerns regarding the safeguarding practices at the school will be raised with the SLT, and the necessary whistleblowing procedures will be followed, as outlined in the Whistleblowing Policy.
- 25.4 If a staff member feels unable to raise an issue with the SLT, they should access other whistleblowing channels such as the NSPCC whistleblowing helpline (0800 028 0285).
- 25.5 Any allegations of abuse made against staff members will be dealt with in accordance with the college's Allegations of Abuse Against Staff Policy.

26. Dealing with allegations of abuse against staff

- 26.1 All allegations will be dealt with in line with the college's Allegations of Abuse Against Staff Policy, a copy of which will be provided to, and understood by, all staff.
- 26.2 Where an allegation is substantiated, and the individual is dismissed or resigns, the college will refer it to the DBS. They will also consider referring the matter to the TRA for consideration for a prohibition order.
- 26.3 If a case manager is concerned about the welfare of other children in the community following a staff member's suspension, they may report this concern to CSCS.
- 26.4 The college will preserve records which contain information about allegations of sexual abuse for the Independent Inquiry into Child Sexual Abuse (IICSA), for the term of the inquiry in question.

27. Allegations of abuse against other students (peer-on-peer abuse)

Sexual harassment

- 27.1 Sexual harassment refers to unwanted conduct of a sexual nature that occurs online or offline. Sexual harassment violates a student's dignity and makes them feel intimidated, degraded or humiliated, and can create a hostile, sexualised or offensive environment. If left unchallenged, sexual harassment can create an atmosphere that normalises inappropriate behaviour and may lead to sexual violence.
- 27.2 Sexual harassment includes:
- Sexual comments.
 - Sexual "jokes" and taunting.
 - Physical behaviour, such as deliberately brushing against another student.
 - Online sexual harassment, including non-consensual sharing of images and videos and consensual sharing of sexual images and videos (often known as sexting), inappropriate comments on social media, exploitation, coercion and threats – online sexual harassment may be isolated or part of a wider pattern.

Sexual violence

- 27.3 Sexual violence refers to the three following offences:

- **Rape:** A person (A) commits an offence of rape if he intentionally penetrates the vagina, anus or mouth of another person (B) with his penis, B does not consent to the penetration and A does not reasonably believe that B consents.
- **Assault by Penetration:** A person (A) commits an offence if s/he intentionally penetrates the vagina or anus of another person (B) with a part of her/his body or anything else, the penetration is sexual, B does not consent to the penetration and A does not reasonably believe that B consents.
- **Sexual Assault:** A person (A) commits an offence of sexual assault if s/he intentionally touches another person (B), the touching is sexual, B does not consent to the touching and A does not reasonably believe that B consents.
- Harmful sexual behaviours

27.4 The term “**harmful sexual behaviour**” is used to describe behaviour that is problematic, abusive and violent, and that may cause developmental damage. Harmful sexual behaviour may include:

- Using sexually explicit words and phrases.
- Inappropriate touching.
- Sexual violence or threats.
- Full penetrative sex with other children or adults.
- Sexual interest in adults or children of very different ages to their own.
- Forceful or aggressive sexual behaviour.
- Compulsive habits.
- Sexual behaviour affecting progress and achievement.
- Using sexually explicit words and phrases.
- Inappropriate touching.
- Sexual violence or threats.

27.5 Sexual behaviour can also be harmful if one of the children is much older (especially where there is two years or more difference, or where one child is pre-pubescent and the other is not) and where the child may have SEND.

A preventative approach

27.6 In order to prevent peer-on-peer abuse and address the wider societal factors that can influence behaviour, the college will educate students about abuse, its forms and the importance of discussing any concerns and respecting others through the curriculum, assemblies and PSHE lessons.

27.7 The college will also ensure that students are taught about safeguarding, including online safety, as part of a broad and balanced curriculum in PSHE lessons, RSE and group sessions. Such content will be age and stage of development specific, and tackle issues such as the following:

- Healthy relationships
- Respectful behaviour
- Gender roles, stereotyping and equality
- Body confidence and self-esteem

- Prejudiced behaviour
- That sexual violence and sexual harassment is always wrong
- Addressing cultures of sexual harassment

27.8 Students will be allowed an open forum to talk about concerns and sexual behaviour. They are taught how to raise concerns and make a report, including concerns about their friends or peers, and how a report will be handled

Awareness

27.9 All staff will be aware that students of any age and sex are capable of abusing their peers and will never tolerate abuse as “banter” or “part of growing up”.

27.10 All staff will be aware that peer-on-peer abuse can be manifested in many different ways, including sexting and gender issues, such as girls being sexually touched or assaulted, and boys being subjected to hazing/initiation type of violence which aims to cause physical, emotional or psychological harm.

27.11 All staff will be made aware of the heightened vulnerability of students with SEND, who are three times more likely to be abused than their peers. Staff will not assume that possible indicators of abuse relate to the student’s SEND and will always explore indicators further.

27.12 LGBTQ+ children can be targeted by their peers. In some cases, children who are perceived to be LGBTQ+, whether they are or not, can be just as vulnerable to abuse as LGBTQ+ children.

27.13 The school’s response to boy-on-boy and girl-on-girl sexual violence and sexual harassment will be equally as robust as it is for incidents between children of the opposite sex.

27.14 Students will be made aware of how to raise concerns or make a report and how any reports will be handled. This includes the process for reporting concerns about friends or peers.

Support available if a child has been harmed, is in immediate danger or at risk of harm

27.15 If a child has been harmed, is in immediate danger or is at risk of harm, a referral will be made to CSCS.

27.16 Within one working day, a social worker will respond to the referrer to explain the action that will be taken.

Support available if early help, section 17 and/or section 47 statutory assessments are appropriate

27.17 If early help, section 17 and/or section 47 statutory assessments (assessments under the Children Act 1989) are appropriate, college staff may be required to support external agencies. The DSL and deputies will support staff as required.

Support available if a crime may have been committed

27.18 Rape, assault by penetration and sexual assaults are crimes. Where a report includes such an act, the police will be notified, often as a natural progression of making a referral to CSCS. The DSL will be aware of the local process for referrals to both CSCS and the police.

27.19 Whilst the age of criminal responsibility is 10 years of age, if the alleged perpetrator is under 10, the principle of referring to the police remains. In these cases, the police will take a welfare approach rather than a criminal justice approach.

27.20 The college has a close relationship with the local police force and the DSL will liaise closely with the local police presence.

Support available if reports include online behaviour

27.21 Online concerns can be especially complicated. The college recognises that there is potential for an online incident to extend further than the local community and for a victim, or the alleged perpetrator, to become marginalised and excluded both online and offline. There is also strong potential for repeat victimisation if the content continues to exist.

27.22 If the incident involves sexual images or videos held online, the [Internet Watch Foundation](#) will be consulted to have the material removed.

27.23 Staff will not view or forward illegal images of a child. If they are made aware of such an image, they will contact the DSL.

Managing disclosures

27.24 Victims will always be taken seriously, reassured, supported and kept safe. Victims will never be made to feel like they are causing a problem or made to feel ashamed.

27.25 If a friend of a victim makes a report or a member of staff overhears a conversation, staff will take action – they will never assume that someone else will deal with it. The basic principles remain the same as when a victim reports an incident; however, staff will consider why the victim has not chosen to make a report themselves and the discussion will be handled sensitively and with the help of CSCS where necessary. If staff are in any doubt, they will speak to the DSL.

27.26 Where an alleged incident took place away from the college or online but involved students from the college, the college's duty to safeguard students remains the same.

27.27 All staff will be trained to handle disclosures. Effective safeguarding practice includes:

- Never promising confidentiality at the initial stage.
- Only sharing the report with those necessary for its progression.
- Explaining to the victim what the next steps will be and who the report will be passed to.
- Recognising that the person the child chose to disclose the information to is in a position of trust.
- Being clear about boundaries and how the report will be progressed.
- Not asking leading questions and only prompting the child with open questions.
- Waiting until the end of the disclosure to immediately write a thorough summary. If notes must be taken during the disclosure, it is important to still remain engaged and not appear distracted.
- Only recording the facts as the child presents them – not the opinions of the note taker.

- Where the report includes an online element, being aware of searching, screening and confiscation advice and [UKCCIS sexting advice](#).
- Wherever possible, managing disclosures with two staff members present (preferably with the DSL or a deputy as one of the staff members).
- Informing the DSL or deputy as soon as possible after the disclosure if they could not be involved in the disclosure.

27.28 The DSL will be informed of any allegations of abuse against students with SEND. They will record the incident in writing and, working with the SENCO, decide what course of action is necessary, with the best interests of the student in mind at all times.

Confidentiality

27.29 The college will only engage staff and agencies required to support the victim and/or be involved in any investigation. If a victim asks the college not to tell anyone about the disclosure, the college cannot make this promise. Even without the victim's consent, the information may still be lawfully shared if it is in the public interest and protects children from harm.

27.30 The DSL will consider the following when making confidentiality decisions:

- Parents will be informed unless it will place the victim at greater risk.
- If a child is at risk of harm, is in immediate danger or has been harmed, a referral will be made to CSCS.
- Rape, assault by penetration and sexual assaults are crimes – reports containing any such crimes will be passed to the police.

27.31 The DSL will weigh the victim's wishes against their duty to protect the victim and others. If a referral is made against the victim's wishes, it will be done so extremely carefully and the reasons for referral will be explained to the victim. Appropriate specialist support will always be offered.

Anonymity

27.32 There are legal requirements for anonymity where a case is progressing through the criminal justice system. The college will do all it can to protect the anonymity of children involved in any report of sexual violence or sexual harassment. It will carefully consider, based on the nature of the report, which staff will be informed and what support will be in place for the children involved.

27.33 When deciding on the steps to take, the college will consider the role of social media in potentially exposing victims' identities and facilitating the spread of rumours.

Risk assessment

27.34 The DSL or a deputy will make an immediate risk and needs assessment any time there is a report of sexual violence. For reports of sexual harassment, a risk assessment will be considered on a case-by-case basis. Risk assessments are not intended to replace the detailed assessments of experts, and for incidents of sexual violence it is likely that a professional risk assessment by a social worker or sexual violence specialist will be required.

27.35 Risk assessments will consider:

- The victim.
- The alleged perpetrator.
- Other children at the college, especially any actions that are appropriate to protect them.

27.36 Risk assessments will be recorded (either on paper or electronically) and kept under review in accordance with the college's Data Protection Policy.

Taking action following a disclosure

27.37 The DSL or a deputy will decide the college's initial response, taking into consideration:

- The victim's wishes.
- The nature of the incident.
- The ages and developmental stages of the children involved.
- Any power imbalance between the children.
- Whether the incident is a one-off or part of a pattern.
- Any ongoing risks.
- Any related issues and the wider context, such as whether there are wider environmental factors in a child's life that threaten their safety and/or welfare.
- The best interests of the child.
- That sexual violence and sexual harassment are always unacceptable and will not be tolerated.

27.38 Immediate consideration will be given as to how to support the victim, alleged perpetrator and any other children involved.

27.39 For reports of rape and assault by penetration, whilst the college establishes the facts, the alleged perpetrator will be removed from any classes shared with the victim. The college will consider how to keep the victim and alleged perpetrator apart on college premises, and on transport where applicable. These actions will not be seen as a judgement of guilt on the alleged perpetrator.

27.40 For reports of sexual violence and sexual harassment, the proximity of the victim and alleged perpetrator and the suitability of shared classes, premises and transport will be considered immediately.

27.41 In all cases, the initial report will be carefully evaluated and the wishes of the victim, nature of the allegations and requirement to protect all children will be taken into consideration.

Managing the report

27.42 The decision of when to inform the alleged perpetrator of a report will be made on a case-by-case basis. If a report is being referred to CSCS or the police, the college will speak to the relevant agency to discuss informing the alleged perpetrator.

27.43 There are four likely outcomes when managing reports of sexual violence or sexual harassment:

- Managing internally
- Providing early help
- Referring to CSCS

- Reporting to the police

27.44 Whatever outcome is chosen, it will be underpinned by the principle that sexual violence and sexual harassment is never acceptable and will not be tolerated. All concerns, discussion, decisions and reasons behind decisions will be recorded either on paper or electronically.

27.45 The following situations are statutorily clear and do not allow for contrary decisions:

- A child under the age of 13 can never consent to sexual activity.
- The age of consent is 16.
- Sexual intercourse without consent is rape.
- Rape, assault by penetration and sexual assault are defined in law.
- Creating and sharing sexual photos and videos of children under 18 is illegal – including children making and sending images and videos of themselves.

Managing internally

27.46 In some cases, e.g. one-off incidents, the college may decide to handle the incident internally through behaviour and bullying policies and by providing pastoral support.

Providing early help

27.47 The college may decide that statutory interventions are not required, but that students may benefit from early help – providing support as soon as a problem emerges. This approach can be particularly useful in addressing non-violent harmful sexual behaviour and may prevent escalation of sexual violence.

Referral to CSCS

27.48 If a child has been harmed, is at risk of harm or is in immediate danger, the college will make a referral to CSCS. Parents will be informed unless there is a compelling reason not to do so (if referral will place the victim at risk). This decision will be made in consultation with CSCS.

27.49 The college will not wait for the outcome of an investigation before protecting the victim and other children.

27.50 The DSL will work closely with CSCS to ensure that the college's actions do not jeopardise any investigation. Any related risk assessment will be used to inform all decisions.

27.51 If CSCS decide that a statutory investigation is not appropriate, the college will consider referring the incident again if they believe the child to be in immediate danger or at risk of harm.

27.52 If the college agrees with the decision made by CSCS, they will consider the use of other support mechanisms such as early help, pastoral support and specialist support.

Reporting to the police

27.53 Reports of rape, assault by penetration or sexual assault will be passed on to the police – even if the alleged perpetrator is under 10 years of age. Generally, this will be in parallel with referral to CSCS. The DSL and deputies will follow the local process for referral.

- 27.54 Parents will be informed unless there is a compelling reason not to do so. Where parents are not informed, it is essential for the college to support the child with any decision they take, in unison with CSCS and any appropriate specialist agencies.
- 27.55 The DSL and governing board will agree what information will be disclosed to staff and others, in particular the alleged perpetrator and their parents. They will also discuss the best way to protect the victim and their anonymity.
- 27.56 The DSL will be aware of local arrangements and specialist units that investigate child abuse.
- 27.57 In some cases, it may become clear that the police will not take further action, for whatever reason. In these circumstances, the college will continue to engage with specialist support for the victim as required.

Bail conditions

- 27.58 Police bail is only used in exceptional circumstances. It is unlikely that a child will be placed on police bail if alternative measures can be used to mitigate risks.
- 27.59 The college will work with CSCS and the police to support the victim, alleged perpetrator and other children (especially witnesses) during criminal investigations. The college will seek advice from the police to ensure they meet their safeguarding responsibilities.
- 27.60 The term ‘released under investigation’ (RUI) is used to describe alleged perpetrators released in circumstances that do not warrant the application of bail.
- 27.61 Where bail is deemed necessary, the college will work with CSCS and the police to safeguard children – ensuring that the victim can continue in their normal routine and continue to receive a suitable education.
- 27.62 Managing delays in the criminal justice system
- 27.63 The college will not wait for the outcome (or even the start) of criminal proceedings before protecting the victim, alleged perpetrator and other children. The associated risk assessment will be used to inform any decisions made.
- 27.64 The DSL will work closely with the police to ensure the college does not jeopardise any criminal proceedings, and to obtain help and support as necessary.

The end of the criminal process

- 27.65 Risk assessments will be updated if the alleged perpetrator receives a caution or is convicted. If the perpetrator remains in the same college as the victim, the college will set out clear expectations regarding the perpetrator, including their behaviour and any restrictions deemed reasonable and proportionate with regards to the perpetrator’s timetable.
- 27.66 The college will ensure that the victim and perpetrator remain protected from bullying and harassment (including online).
- 27.67 Where an alleged perpetrator is found not guilty or a case is classed as requiring “no further action”, the college will offer support to the victim and alleged perpetrator for as long as is necessary. The victim is likely to be traumatised and the fact that an allegation cannot be substantiated does not necessarily mean that it was unfounded. The college will discuss decisions with the victim and offer support.

27.68 The alleged perpetrator is also likely to require ongoing support, as they have also been through a difficult and upsetting experience.

- Ongoing support for the victim

27.69 Any decisions regarding safeguarding and supporting the victim will be made with the following considerations in mind:

- The terminology the college uses to describe the victim
- The age and developmental stage of the victim
- The needs and wishes of the victim
- Whether the victim wishes to continue in their normal routine
- The victim will not be made to feel ashamed about making a report
- What a proportionate response looks like

27.70 Victims may not disclose the whole picture immediately and they may be more comfortable talking about the incident on a piecemeal basis; therefore, a dialogue will be kept open and the victim can choose to appoint a designated trusted adult.

27.71 Victims may struggle in a normal classroom environment. Whilst it is important not to isolate the victim, the victim may wish to be withdrawn from lessons and activities at times. This will only happen when the victim wants it to, not because it makes it easier to manage the situation.

27.72 The college will provide a physical space for victims to withdraw to.

27.73 Victims may require support for a long period of time and the college will be prepared to offer long-term support in liaison with relevant agencies.

27.74 Everything possible will be done to prevent the victim from bullying and harassment as a result of any report they have made.

27.75 If the victim is unable to remain in the college, alternative provision or a move to another college will be considered – this will only be considered at the request of the victim and following discussion with their parents.

27.76 If the victim does move to another school, the DSL will inform the school of any ongoing support needs and transfer the child protection file.

- Ongoing support for the alleged perpetrator

27.77 When considering the support required for an alleged perpetrator, the college will take into account:

- The terminology they use to describe the alleged perpetrator or perpetrator.
- The balance of safeguarding the victim and providing the alleged perpetrator with education and support.
- The reasons why the alleged perpetrator may have abused the victim – and the support necessary.
- Their age and developmental stage.
- What a proportionate response looks like.

- Whether the behaviour is a symptom of their own abuse or exposure to abusive practices and/or materials.

- 27.78 When making a decision, advice will be taken from CSCS, specialist sexual violence services and the police as appropriate.
- 27.79 If the alleged perpetrator moves to another school (for any reason), the DSL will inform the destination school of any ongoing support needs and transfer the child protection file.
- 27.80 The college will work with professionals as required to understand why the abuse took place and provide a high level of support to help the student understand and overcome the reasons for their behaviour and reduce the likelihood of them abusing again.
- 27.81 Disciplining the alleged perpetrator
- 27.82 Disciplinary action can be taken whilst investigations are ongoing and the fact that investigations are ongoing does not prevent the college reaching its own conclusion and imposing an appropriate penalty.
- 27.83 The college will make such decisions on a case-by-case basis, with the DSL taking a leading role. The college will take into consideration whether any action would prejudice an investigation and/or subsequent prosecution. The police and CSCS will be consulted where necessary.
- 27.84 The college will also consider whether circumstances make it unreasonable or irrational for the college to make a decision about what happened while an investigation is considering the same facts.
- 27.85 Disciplinary action and support can take place at the same time.
- 27.86 The college will be clear whether action taken is disciplinary, supportive or both.
- 27.87 Shared classes
- 27.88 Once the DSL has decided to progress a report, they will again consider whether the victim and alleged perpetrator will be separated in classes, on college premises and on college transport – balancing the college’s duty to educate against its duty to safeguard. The best interests of the student will always come first.
- 27.89 Where there is a criminal investigation into rape or assault by penetration, the alleged perpetrator will be removed from classes with the victim and potential contact on college premises and transport will be prevented.
- 27.90 Where a criminal investigation into rape or assault by penetration leads to a conviction or caution, in all but the most exceptional circumstances, this will constitute a serious breach of discipline and result in the view that allowing the perpetrator to remain in the college would harm the education or welfare of the victim and potentially other students.
- 27.91 Where a criminal investigation into sexual assault leads to a conviction or caution, the college will consider suitable sanctions and permanent exclusion. If the perpetrator will remain at the college, the college will keep the victim and perpetrator in separate classes and manage potential contact on college premises and transport. The nature of the conviction or caution, alongside the wishes of the victim, will inform any discussions made.

27.92 Where a report of sexual assault does not lead to a police investigation, this does not mean that the offence did not happen or that the victim has lied. Both the victim and alleged perpetrator will be affected and appropriate support will be provided. Considerations regarding sharing classes and potential contact will be made on a case-by-case basis.

27.93 In all cases, the college will record its decisions and be able to justify them. The needs and wishes of the victim will always be at the heart of the process.

Working with parents and carers

27.94 In most sexual violence cases, the college will work with the parents of both the victim and alleged perpetrator. For cases of sexual harassment, these decisions will be made on a case-by-case basis.

27.95 The college will meet the victim's parents with the victim present to discuss the arrangements being put in place to safeguard the victim, and to understand their wishes in terms of support arrangements and the progression of the report.

27.96 The college will also meet with the parents of the alleged perpetrator to discuss arrangements that will impact their child, such as moving them out of classes with the victim. Reasons behind decisions will be explained and the support being made available will be discussed. The DSL or a deputy will attend such meetings, with agencies invited as necessary.

27.97 Clear policies regarding how the college will handle reports of sexual violence and how victims and alleged perpetrators will be supported will be made available to parents.

Safeguarding other children

27.98 Children who have witnessed sexual violence, especially rape and assault by penetration, will be provided with support.

27.99 It is likely that children will "take sides" following a report, and the college will do everything in its power to protect the victim, alleged perpetrator and witnesses from bullying and harassment.

27.100 The college will keep in mind that contact may be made between the victim and alleged perpetrator and that harassment from friends of both parties could take place via social media and do everything in its power to prevent such activity.

27.101 As part of the college's risk assessment following a report, transport arrangements will be considered, as it is a potentially vulnerable place for both a victim and alleged perpetrator. The college will consider any additional support that can be put in place.

28. Communication and confidentiality

28.1 All child protection and safeguarding concerns will be treated in the strictest of confidence in accordance with college data protection policies.

28.2 Where there is an allegation or incident of sexual abuse or violence, the victim is entitled to anonymity by law; therefore, the school will consult its policy and agree what information will be disclosed to staff and others, in particular the alleged perpetrator and their parents.

- 28.3 Where a report of sexual violence or sexual harassment is progressing through the criminal justice system, the college will do all it can to protect the anonymity of the students involved in the case.
- 28.4 Concerns will only be reported to those necessary for its progression and reports will only be shared amongst staff members and with external agencies on a need-to-know basis.
- 28.5 During disclosure of a concern by a student, staff members will not promise the student confidentiality and will ensure that they are aware of what information will be shared, with whom and why.
- 28.6 Where it is in the public interest, and protects students from harm, information can be lawfully shared without the victim's consent, e.g. if doing so would assist the prevention, detection or prosecution of a serious crime.
- 28.7 Before doing so, the DSL will weigh the victim's wishes against their duty to protect the victim and others.
- 28.8 Where a referral is made against the victim's wishes, it is done so carefully with the reasons for the referral explained to the victim and specialist support offered.
- 28.9 Depending on the nature of a concern, the DSL will discuss the concern with the parents of the students involved.
- 28.10 Discussions with parents will not take place where they could potentially put a student at risk of harm.
- 28.11 Discussion with the victim's parents will relate to the arrangements being put in place to safeguard the victim, with the aim of understanding their wishes in terms of support arrangements and the progression of the report.
- 28.12 Discussion with the alleged perpetrator's parents will have regards to the arrangements that will impact their child, such as moving classes, etc., with the reasons behind decisions being explained and the available support discussed.
- 28.13 External agencies will be invited to these discussions where necessary.
- 28.14 Where confidentiality or anonymity has been breached, the college will implement the appropriate disciplinary procedures as necessary and will analyse how damage can be minimised and future breaches be prevented.
- 28.15 Where a student is leaving the college, the DSL will consider whether it is appropriate to share any information with the student's new provider, in addition to the child protection file, that will allow the new provider to support the student and arrange appropriate support for their arrival.

29. Online safety

- 29.1 As part of a broad and balanced curriculum, all students will be made aware of online risks and taught how to stay safe online.
- 29.2 Through training, all staff members will be made aware of the following:

- Student attitudes and behaviours which may indicate they are at risk of potential harm online
 - The procedure to follow when they have a concern regarding a student's online activity
- 29.3 The college will ensure that suitable filtering systems are in place to prevent children accessing terrorist and extremist material, in accordance with the school's Data and E-Security Breach Prevention and Management Plan.
- 29.4 The use of mobile phones by staff and students is closely monitored by the college, in accordance with the Acceptable Use Policy.
- 29.5 The college will ensure that the use of filtering and monitoring systems does not cause "over blocking" which may lead to unreasonable restrictions as to what students can be taught regarding online teaching.

30. Mobile phone and camera safety

- 30.1 Staff members will not use personal mobile phones or cameras when students are present.
- 30.2 Staff may use mobile phones on college premises outside of working hours when no students are present.
- 30.3 Staff may use mobile phones in the staffroom during breaks and non-contact time.
- 30.4 Mobile phones will be safely stored and in silent mode whilst students are present.
- 30.5 Staff will use their professional judgement in emergency situations.
- 30.6 Staff may take mobile phones on trips, but they must only be used in emergencies and should not be used when students are present.
- 30.7 Mobile devices will not be used to take images or videos of students or staff in any circumstances.
- 30.8 The sending of inappropriate messages or images from mobile devices is strictly prohibited.
- 30.9 Staff who do not adhere to this policy will face disciplinary action.
- 30.10 The ICT technician and the e-safety officer will review and authorise any downloadable apps – no apps or programmes will be downloaded without express permission from an ICT technician or the e-safety officer.
- 30.11 The college will adhere to the terms of the Acceptable Use Policy at all times.
- 30.12 Photographs and videos of students will be carefully planned before any activity with particular regard to consent and adhering to the college's Data Protection Policy.
- 30.13 The DPO will oversee the planning of any events where photographs and videos will be taken.
- 30.14 Where photographs and videos will involve LAC students, adopted students, or students for whom there are security concerns, the principal will liaise with the DSL to determine the steps involved.

- 30.15 The DSL will, in known cases of a student who is a LAC or who has been adopted, liaise with the student's social worker, carers or adoptive parents to assess the needs and risks associated with the student.
- 30.16 The college will adhere to its Photography Policy at all times.
- 30.17 Staff will report any concerns about another staff member's use of mobile phones to the DSL, following the procedures outlined in the Child Protection and Safeguarding Policy and the Allegations of Abuse Against Staff Policy.

31. Sports clubs and extracurricular activities

- 31.1 Clubs and extracurricular activities hosted by external bodies, e.g. charities or companies, will work in collaboration with the college to effectively safeguard students and adhere to local safeguarding arrangements.
- 31.2 Paid and volunteer staff running sports clubs and extracurricular activities are aware of their safeguarding responsibilities and promote the welfare of students.
- 31.3 Paid and volunteer staff understand how they should respond to child protection concerns and how to make a referral to CSCS or the police, if necessary.
- 31.4 All national governing bodies of sport that receive funding from either Sport England or UK Sport, must aim to meet the Standards for Safeguarding and Protecting Children in Sport.

32. Safer recruitment

- 32.1 An enhanced DBS check with barred list information will be undertaken for all staff members engaged in regulated activity. A person will be considered to be in 'regulated activity' if, as a result of their work, they:
- Are responsible on a daily basis for the care or supervision of children.
 - Regularly work in the college at times when children are on the premises.
 - Regularly come into contact with children under 18 years of age.
- 32.2 The DfE's [DBS Workforce Guides](#) will be consulted when determining whether a position fits the child workforce criteria.

Pre-employment checks

- 32.3 The governing board will assess the suitability of prospective employees by:
- Verifying the candidate's identity, preferably from the most current photographic ID and proof of address except where, for exceptional reasons, none is available.
 - Obtaining a certificate for an enhanced DBS check with barred list information where the person will be engaged in regulated activity.
 - Obtaining a separate barred list check if an individual will start work in regulated activity before the DBS certificate is available.
 - Checking that a candidate to be employed as a teacher is not subject to a prohibition order issued by the Secretary of State, using the [TRA Teacher Services' System](#).

- Verifying the candidate's mental and physical fitness to undertake their working responsibilities, including asking relevant questions about disability and health to establish whether they have the physical and mental capacity for the specific role.
- Checking the person's right to work in the UK. If there is uncertainty about whether an individual needs permission to work in the UK, the advice set out on the [Gov.UK](https://www.gov.uk) website will be followed.
- If the person has lived or worked outside the UK, making any further checks that the college considers appropriate; this includes checking for any teacher sanctions or restrictions that an EEA professional regulating authority has imposed.
- Checking professional experience, QTS and qualifications as appropriate using Teacher Services.
- Confirming that an individual taking up a management position is not subject to a section 128 direction.

32.4 An enhanced DBS certificate will be obtained from candidates before or as soon as practicable after appointment. An online update check may be undertaken through the DBS update service if an applicant has subscribed to it and gives their permission.

Internal candidates

32.5 References from internal candidates will always be scrutinised before appointment.

ITT candidates

32.6 Where applicants for ITT are salaried by the college, the college will ensure that enhanced DBS checks with barred list information are carried out.

32.7 Written confirmation will be obtained to ensure that an enhanced DBS certificate and barred list check has been carried out for all fee-funded trainees.

Governors

32.8 The trust requires enhanced DBS checks on all members of the academy trust and individual governors. Before an individual becomes a trustee, the college will carry out an enhanced DBS check and confirm their identity. Where a trustee also engages in regulated activity, a barred list check will also be requested. An additional check is required for those in management positions, to ensure that they are not prohibited under section 128 provisions. Where a barred list check has been performed, the section 128 direction will also be shown and will not require a separate check. If the individual lives or has lived outside of the UK, consideration will be given as to further checks that may be necessary.

Those who have lived or worked outside of the UK

32.9 For those who have lived or worked outside of the UK, additional checks regarding teacher sanctions or restrictions will be conducted, this includes checking for any teacher sanctions or restrictions that an EEA professional regulating authority has imposed.

Barred list check

- 32.10 An enhanced DBS check may be requested for anyone working in college that is not in regulated activity but does not have a barred list check.
- 32.11 If there are concerns about an applicant, an enhanced DBS check with barred list information may be requested, even if they have worked in regulated activity in the three months prior to appointment.
- 32.12 Written information about their previous employment history will be obtained from candidates and the appropriate checks undertaken to ensure information is not contradictory or incomplete.

References

- 32.13 References will be obtained directly from referees and scrutinised, with all concerns satisfactorily resolved prior to confirmation of employment.
- 32.14 References will only be accepted from a senior person and not from a colleague.
- 32.15 References will be sought on all short-listed candidates, including internal ones, before an interview and checked on receipt to ensure that all specific questions were answered satisfactorily.
- 32.16 Where possible references will be obtained prior to interviews taking place and discussed during interviews.
- 32.17 Open testimonials will not be considered.
- 32.18 Information about past disciplinary actions or allegations will be considered carefully when assessing an applicant's suitability for a post.
- 32.19 Information sourced directly from a candidate or online source will be carefully vetted to ensure they originate from a credible source.

Volunteers

- 32.20 No volunteer will be left unsupervised with a student or allowed to work in regulated activity until the necessary checks have been obtained.
- 32.21 An enhanced DBS certificate with barred list check will be obtained for all new volunteers in regulated activity that will regularly teach or look after children on an unsupervised basis or provide personal care on a one-off basis.
- 32.22 Personal care includes helping a child with eating and drinking for reasons of illness, or care in connection with toileting, washing, bathing and dressing for reasons of age, illness or disability.
- 32.23 A supervised volunteer who regularly teaches or looks after children is not in regulated activity.
- 32.24 The college will obtain an enhanced DBS certificate with barred list check for existing volunteers that provide pastoral care.
- 32.25 Unless there is cause for concern, the college will not request any new DBS certificates with barred list check for existing volunteers that have already been checked.

32.26 A risk assessment will be undertaken for volunteers not engaged in regulated activity when deciding whether to seek an enhanced DBS check.

Contractors

32.27 The college will ensure that any contractor or employee of the contractor working on the premises has been subject to the appropriate level of DBS check.

32.28 Checks will be conducted to ensure that the contractor presenting themselves for work is the same person on whom the checks have been made.

32.29 Contractors without a DBS check will be supervised if they will have contact with children. The identity of the contractor will be checked upon their arrival at the school.

Data retention

32.30 DBS certificates will be securely destroyed as soon as practicable, but not retained for longer than six months from receipt.

32.31 A copy of the other documents used to verify the successful candidate's identity, right to work and required qualifications will be kept for the personnel file. The personnel file will be held for the duration of the employee's employment plus six years.

Referral to the DBS

32.32 The college will refer to the DBS anyone who has harmed a child or poses a risk of harm to a child, or if there is reason to believe the member of staff has committed an offence and has been removed from working in regulated activity.

Ongoing suitability

32.33 Following appointment, consideration will be given to staff and volunteers' ongoing suitability – to prevent the opportunity for harm to children or placing children at risk.

33. Single central record (SCR)

33.1 The college keeps an SCR which records all staff, including supply staff and teacher trainees on salaried routes, who work at the college.

33.2 All members of the governing body are also recorded on the SCR.

33.3 The following information is recorded on the SCR:

- An identity check
- A barred list check
- An enhanced DBS check
- A prohibition from teaching check
- A section 128 check
- A check of professional qualifications
- A check to determine the individual's right to work in the UK
- Additional checks for those who have lived or worked outside of the UK

33.4 For agency and third-party supply staff, the college will also record whether written confirmation from the employment business supplying the member of staff has been received

which indicates that all of the necessary checks have been conducted and the date that confirmation was received.

- 33.5 If any checks have been conducted for volunteers, this will also be recorded on the SCR.
- 33.6 If risk assessments are conducted to assess whether a volunteer should be subject to an enhanced DBS check, the risk assessment will be recorded.
- 33.7 The college will record on the SCR whether the employee's position involves relevant activity, i.e. regularly caring for, training, supervising or being solely in charge of persons aged under 18. Written confirmation that supply agencies have completed all relevant checks will also be included.

34. Training

- 34.1 Staff members will undergo safeguarding and child protection training at induction, which will be regularly updated on a termly basis or whenever there is a change in legislation.
- 34.2 The induction training will cover:
- The Child Protection and Safeguarding Policy
 - The Conduct for Learning Policy
 - The Staff Code of Conduct
 - The safeguarding response to children who go missing from education
 - The identity of the DSL and any deputies
 - The role of the DSL and deputy DSLs
- 34.3 All staff members will also receive regular safeguarding and child protection updates as required, but at least annually.
- 34.4 Training will cover, at a minimum:
- The issues surrounding sexual violence and sexual harassment.
 - Contextual safeguarding.
 - How to keep previously LAC safe.
 - Child criminal exploitation and the need to refer cases to the National Referral Mechanism.
- 34.5 Staff will receive opportunities to contribute towards and inform the safeguarding arrangements in the college.
- 34.6 The DSL and deputy DSL will undergo updated child protection training every two years, as well as additional training to refresh their skills and knowledge at regular intervals (at least annually) to allow them to keep up-to-date with any developments relevant to their role.
- 34.7 The DSL and deputy DSL will also undergo biennial Prevent awareness training which will enable them to understand and support the college with regards to the Prevent duty and equip them with the knowledge needed to advise staff.
- 34.8 The DSL and their deputy(s) will undergo online safety training to help them recognise the additional risks that students with SEND face online, for example, from online bullying, grooming and radicalisation, to ensure they have the capability to support students with SEND to stay safe online

34.9 Online training will also be conducted for all staff members as part of the overall safeguarding approach.

35. Monitoring and review

35.1 This policy is reviewed annually by the DSL and the principal.

35.2 Any changes made to this policy by the principal and DSL will be communicated to all members of staff.

35.3 All members of staff are required to familiarise themselves with all processes and procedures outlined in this policy as part of their induction programme.

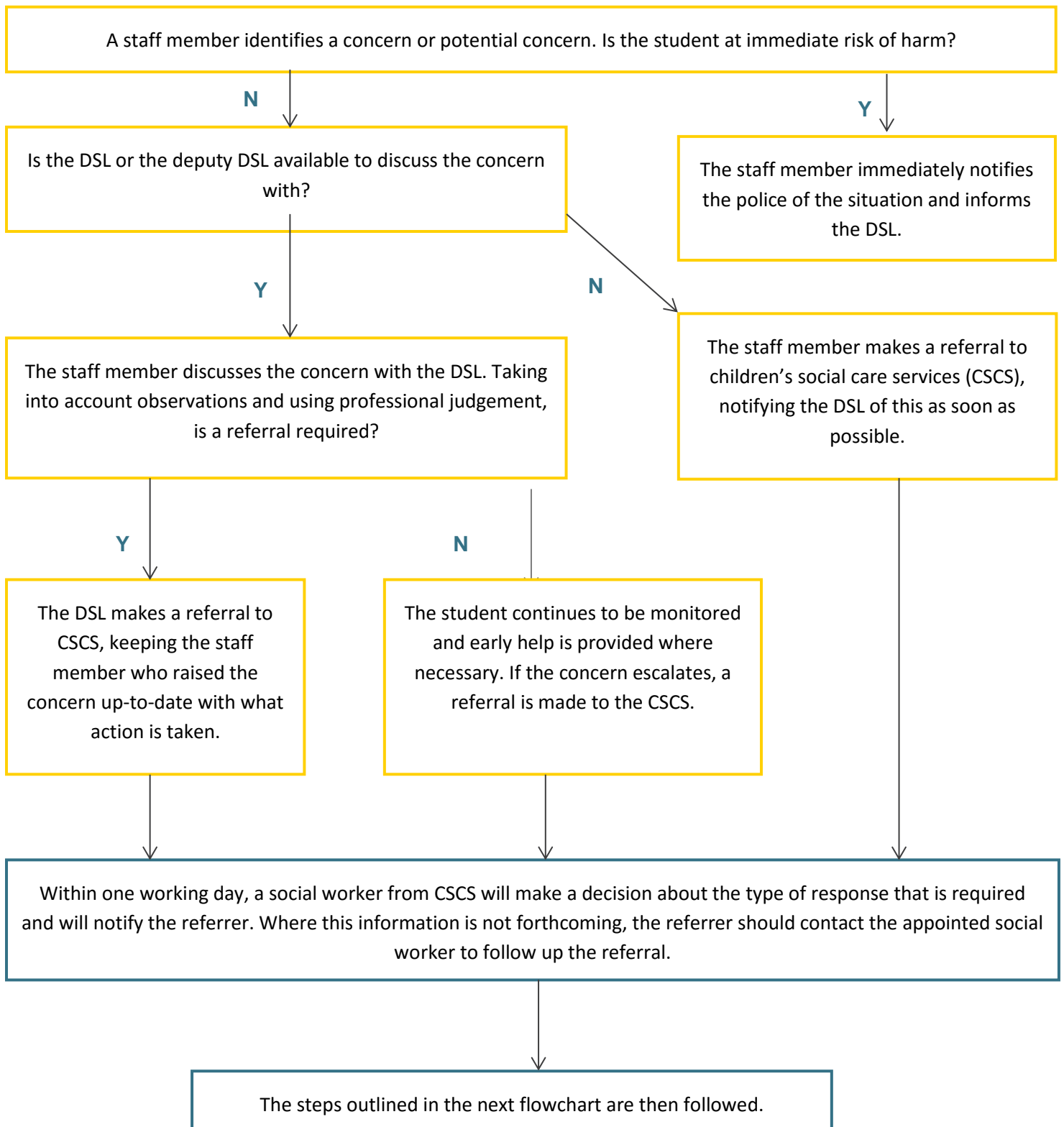
35.4 The next scheduled review date for this policy is September 2019.

Safeguarding Reporting Process

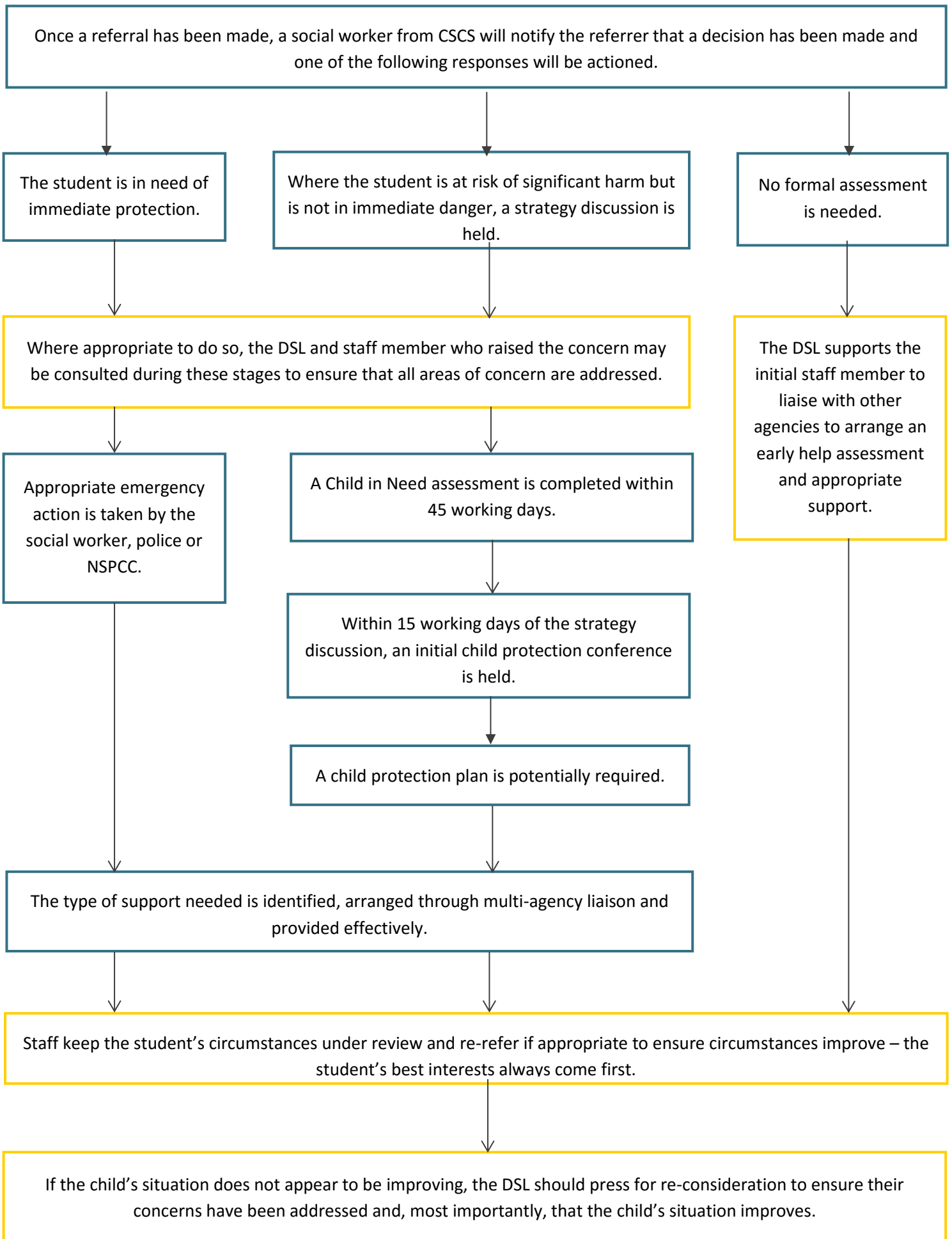
The process outlined within the first section should be followed where a staff member has a safeguarding concern about a child. Where a referral has been made, the process outlined in the 'After a referral is made' section should be followed.

The actions taken by the college are outlined in yellow, whereas actions taken by another agency are outlined in blue.

Before a referral is made



After a referral is made



Contacts and Advice

Prevention Service

- | | | |
|-----------------------------|------------------|--------------|
| • Whitby & The Moors | Diane Leith | 01609 532479 |
| • Ryedale | Simon Osman | 01609 536009 |
| • Scarborough Town | Liz White | 01609 533139 |
| • Scarborough South & Filey | Simone Wilkinson | 01609 532927 |

Children and Families' Service

- Customer Service Centre 01609 780780
social.care@northyorks.gov.uk

Safeguarding Unit

Safeguarding/Designated Officers for Managing Allegations (LADOs)

- | | | |
|------------------|--------------|--------------|
| • Duty Rota LADO | 01609 532477 | |
| • Karen Lewis | 01609 534200 | 07715 540711 |
| • Dave Peat | 01609 535646 | 07814 533363 |

Business Support including CME Coordinator (Children Missing Education)

- safeguardingunit@northyorks.gov.uk
01609 532477

Expert organisations

- [Barnardo's](#)
- [Lucy Faithfull Foundation](#)
- [NSPCC](#)
- [Rape Crisis](#)
- [University of Bedfordshire: Contextual Safeguarding](#)
- [UK Safer Internet Centre](#)

Support for victims

- [Anti-Bullying Alliance](#)
- [MoJ Victim Support](#)
- [Rape Crisis](#)
- [The Survivor's Trust](#)
- [Victim Support](#)

Toolkits

- [Brook](#)
- [NSPCC](#)
- [Safeguarding Unit, Farrer and Co, and Carlene Firmin, MBE, University of Bedfordshire](#)

Further information on confidentiality and information sharing

- [Gillick Competency Fraser Guidelines](#)
- [Government Information Sharing Advice](#)
- [Information Commissioner's Office: Education](#)
- [NSPCC: Things to Know and Consider](#)

Further information on sexting

- [UK Council for Child Internet Safety: Sexting Advice](#)
- [London Grid for Learning – Collection of Advice](#)

Support for parents

- [Parentzone](#)
- [Parentsafe – London Grid for Learning](#)
- [CEOP Thinkuknow – Challenging Harmful Sexual Attitudes and their Impact](#)
- [CEOP Thinkuknow – Supporting Positive Sexual Behaviour](#)